


USM Names New HR Director, Inflates Credentials

HATTIESBURG – According to [a recent USM presser](#), Indiana University’s Linda Rasmussen has been named the new human resources director at USM, succeeding Russ Willis, who has become a vice president in the Martha Saunders administration. According to the press release, Rasmussen, pictured below, was Saunders’ “top choice” following a national search, having “spent the past 16 years as Human Resources Director” at IU.



Linda Rasmussen

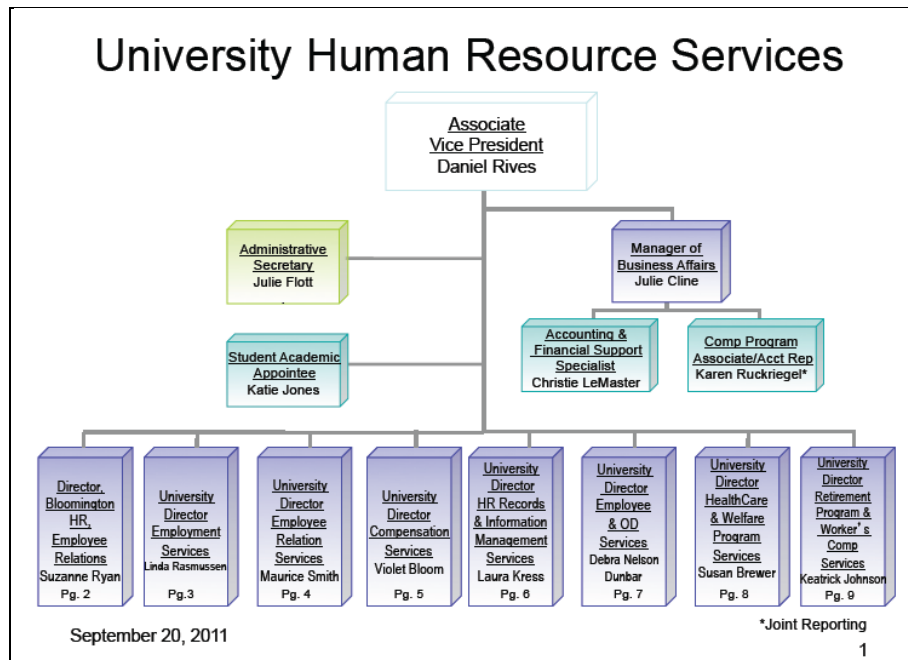
A search of Rasmussen’s background revealed that she has been serving as the University Director of Employment Services, which is a post within University Human Resource Services (UHRS) at IU. There are only three staffers beneath Rasmussen at IU – Henry Dohnert (employment consultant), Stephanie Krebs (office services assistant), and Karen Ottinger (senior office services assistant).

<p>Southern Miss Announces New Director of Human Resources</p> <p>ARTICLE FRI, 09/23/2011 - 8:11AM</p>  <p>Russ Willis, vice president of Administrative Affairs at The University of Southern Mississippi, has announced that Linda Rasmussen will become the university’s new Director of Human Resources, effective Nov. 1.</p> <p>Rasmussen, who has spent the past 16 years as Human Resources Director at Indiana University, emerged as Southern Miss’ top choice following a national search. She will oversee human resources at the main campus in Hattiesburg, Miss. and all Gulf Coast campus sites.</p> <p>“After reviewing the job listing, I examined a lot of material about the university on its Web site. I was very impressed with</p> <p><small>Linda Rasmussen</small></p>	<p>UHRS Staff Directory</p> <p>University Employment Services</p> <hr/> <p>Administration</p> <p>Linda Rasmussen University Director lrasmuss@indiana.edu 855-6927</p> <p>Employment</p> <p>Henry Dohnert Employment Consultant hdohnert@indiana.edu 855-5890</p> <p>Stephanie Krebs Office Services Assistant supers@indiana.edu 855-2172</p> <p>Karen Ottinger Senior Office Services Assistant supers@indiana.edu 855-2172</p>
--	--

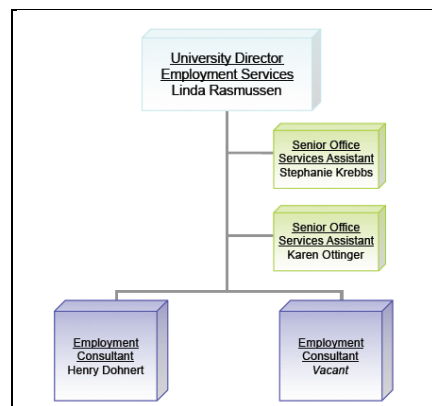
Relevant portion of USM presser announcing Rasmussen’s credentials.

Screen of Rasmussen’s branch of IU’s UHRS.

Inserted below is the top portion of the UHRS organizational chart at IU, as of 20-Sept-2011. Listed at the top is Daniel Rives, associate vice president at IU. Rives’ position at IU is equivalent to that held before by Willis, and now by Rasmussen, at USM.



The insert above shows that Rasmussen is under Rives, who has five other staffers who report to him in the areas of finance, business affairs, and administrative assistance. Next to Rasmussen are *seven* other mid-level human resource administrators/managers, each with his or her own staff. The organizational layout of Rasmussen's section is inserted below, with the only difference from what is noted above being the employment consultant vacancy.



Clearly, the implication (in the USM presser) that Rasmussen was head of human resources at IU is seriously misleading, explaining why many readers were likely surprised that an HR director from IU would make the move to USM for the same position. Whether that misdirection is simply the result of another snafu within USM's public relations apparatus is not now known.